

Access to MRI Centre – St Vincent’s Hospital Melbourne

St Vincent’s Campus map



Enter at 41 Victoria Parade (building C), 11 steps at doorway. Accessible way via building B (can't be used after hours).



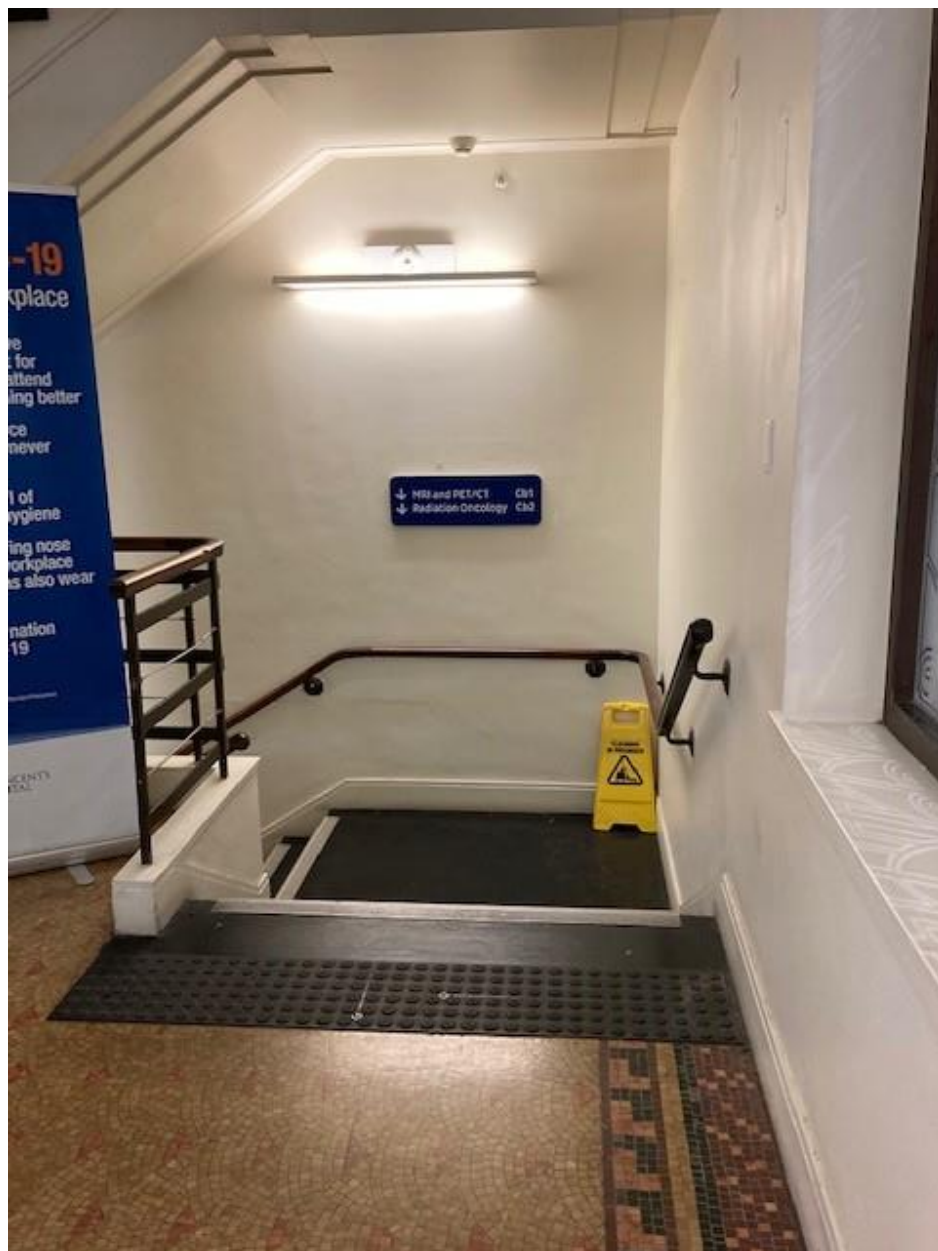
If your appointment is after hours (after 5.30pm) – press this button to speak with someone who can let you in.



This is the foyer, walk straight ahead to the lift or the stairs. You can get your mask here.



You can take the stairs down to the MRI Centre.



Or you can take the lift down to the MRI centre. Press button to go down. When you are in the lift press 'B'



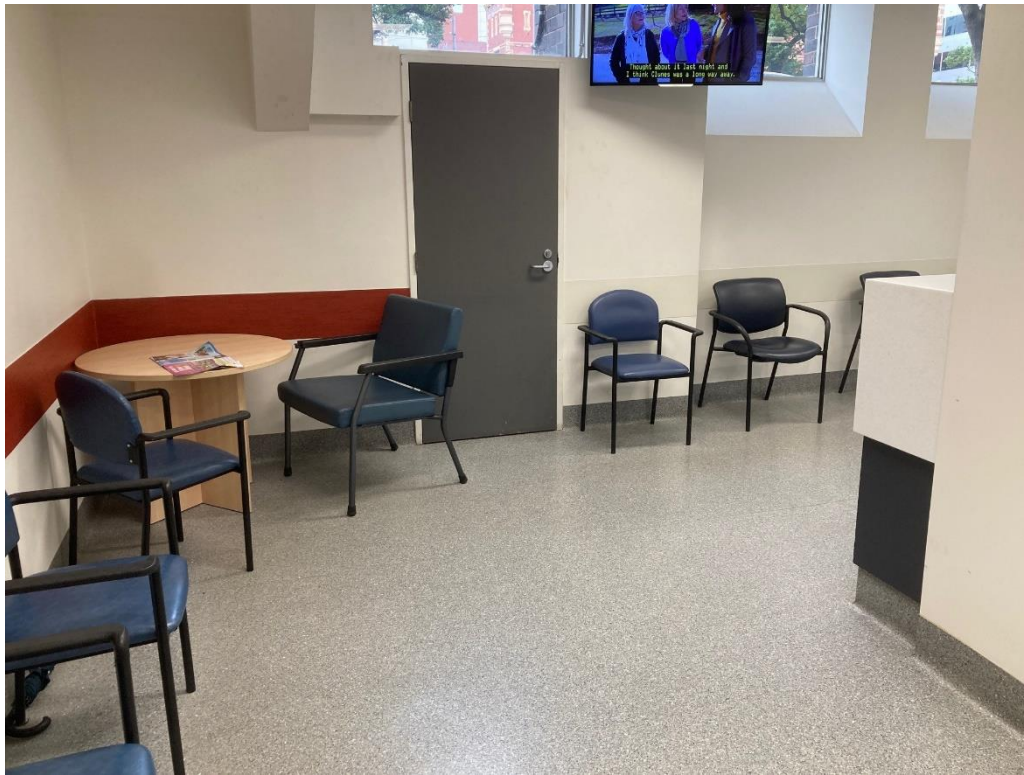
When you get to the bottom of the stairs or get out of the lift, go to the reception.



Reception: The staff will ask you your name, date of birth and phone number or address. They will ask you two questions about COVID-19.



You will then sit in the waiting area.



This area is the quietest part of the waiting area.

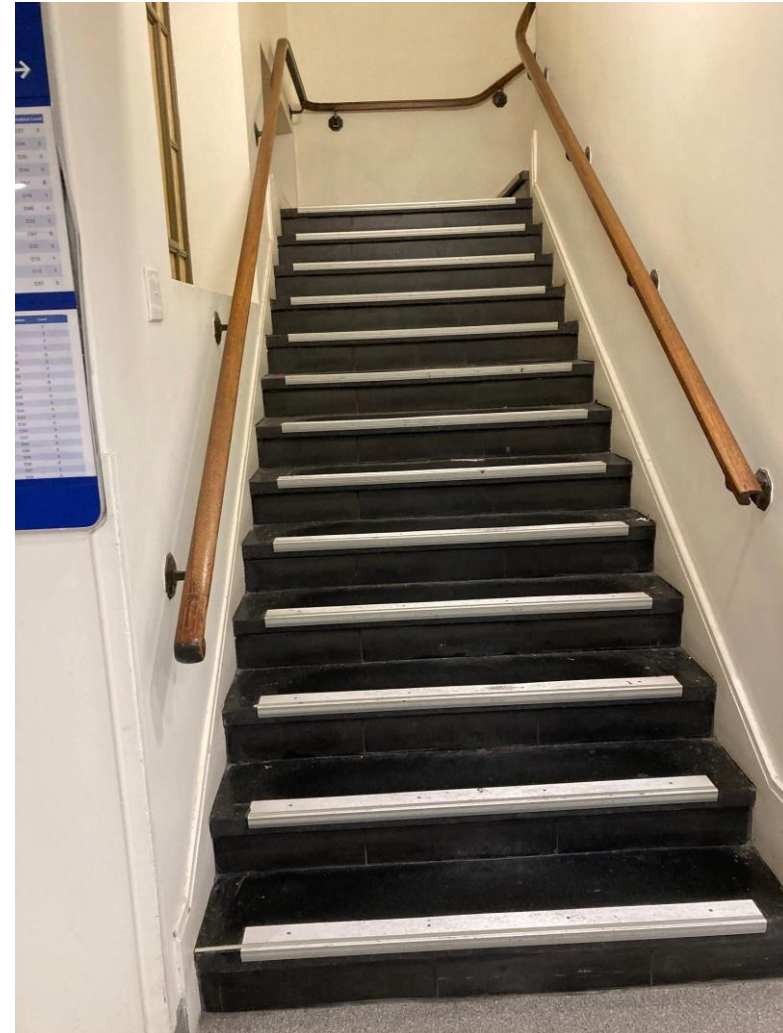


Leaving the MRI centre:

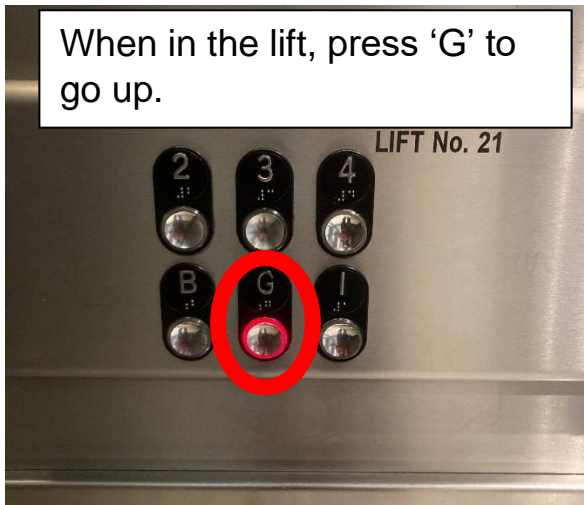
Take the lift, press button to go up.



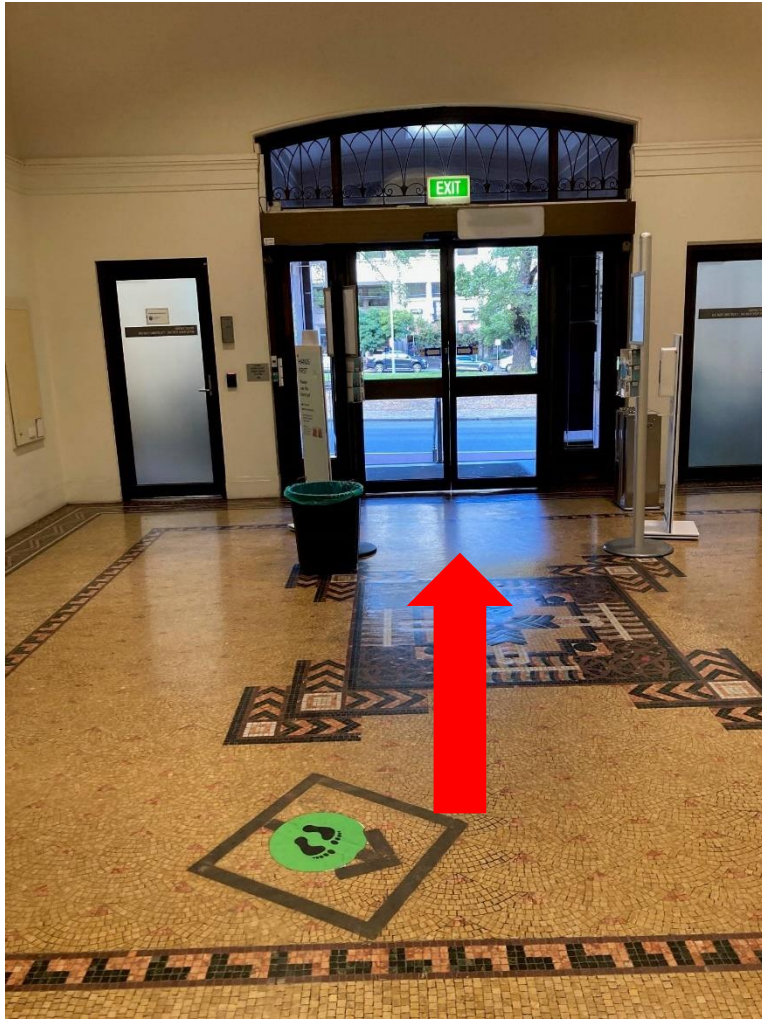
Or take the stairs.



When in the lift, press 'G' to go up.



Exit the same way you came in.



After hours, press green button on left to open doors.

